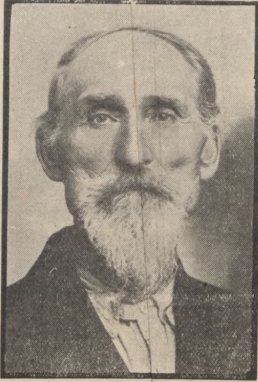


**ATLAS**

— OF —

**Keokuk County**

**1912**



JOHN A. SEARCY



CHIEF KEOKUK



LYDIA H. SIGOURNEY

## Facts About Iowa and Keokuk County

Midway between the Atlantic and Pacific, bounded on the east by the Mississippi and on the west by the Missouri, lies our great state of Iowa famed for its fertile soil, beautiful scenery, and peopled by a class of citizens known for their energy, industry, enterprise and intelligence. How long this beautiful prairie state was the home of the mound builders and the Indians is merely conjecture. We know however that the first white settlement within its boundaries was made by a French Canadian, Julien Dubque, in 1788, at the place which now bears his name.

From 1803 to 1838 Iowa was consecutively a part of the "District of Louisiana," Territory of Missouri, "Territory of Michigan" and "Territory of Wisconsin." On July 4th, 1838 the Territory of Iowa came into existence. It included all of the present state and what is now Minnesota. The seat of government was at Burlington and the governor was Robert Lucas, ex-governor of Ohio, who was appointed by Martin Van Buren. In 1841 the capital was moved to Iowa City where it remained fifteen years when it was moved to Des Moines. In 1846 the present boundaries were agreed upon and on December 28th, 1846 Iowa was admitted as the twenty-ninth state. Ansel Briggs was the first governor of the new state.

Iowa's record of advancement in material and industrial development is a marvelous page in history, while her progress in education, religious ideas and moral reform has not been surpassed by any other state in the Union.

Sixty-six years of Statehood find her standing side by side with the oldest States in the Union, equalling them in educational development, in industrial enterprises and in opportunity, while surpassing many of them in moral reforms, religious activity and true ideas of living.

The area of Iowa is 56,025 square miles and the population in 1910 was 2,224,771. Des Moines, the capital and largest city of the state has a population of 86,368.

### KEOKUK COUNTY

Keokuk County was named for the Indian Chief "Keokuk", who was the principal chief of the treaty which guaranteed to the white man a home within the limits of the county.

The first white settler in the county was Aaron Miller who settled near Richland, March 1833.

In 1843 the legislature of the territory passed an act fixing

the boundary lines of the county and in 1844 the legislature provided for the organization of the county.

On the 10th day of May 1844, the location of the county seat was fixed at Sigourney and the county duly organized.

The first county officers were elected in April 1844 and were, County commissioners, Jeremiah Hollingsworth, James M. Smith, Enos Darnell; Judge of Probate, John M. Waters; County Treasurer, William H. Brown; County Surveyor, Samuel E. McCracken; County Assessor, Andrew Ogden, County Sheriff, George W. Hayes; County Recorder, A. P. Tannahill; Clerk of Commission, Edom Shugar.

The first white child born in the county was J. F. Searcy December 15th, 1840. Mr. Searcy is still a resident of the county and we give here a good picture of him as he appears at the present time.

At the time of the organization of the county there were fewer than 1000 people within the borders, at the last census, 1910 there were 21,160.

The population of the incorporated towns are as follows:

Sigourney . . . . .	2032
What Cheer . . . . .	1720
Keota . . . . .	988
Hedrick . . . . .	978
Delta . . . . .	728
Richland . . . . .	613
South English . . . . .	338
Ollie . . . . .	289
Martinsburg . . . . .	285
Thornburg . . . . .	233
Harper . . . . .	232
Kinross . . . . .	142
Webster . . . . .	127

Since 1910 the town of Keswick has incorporated.

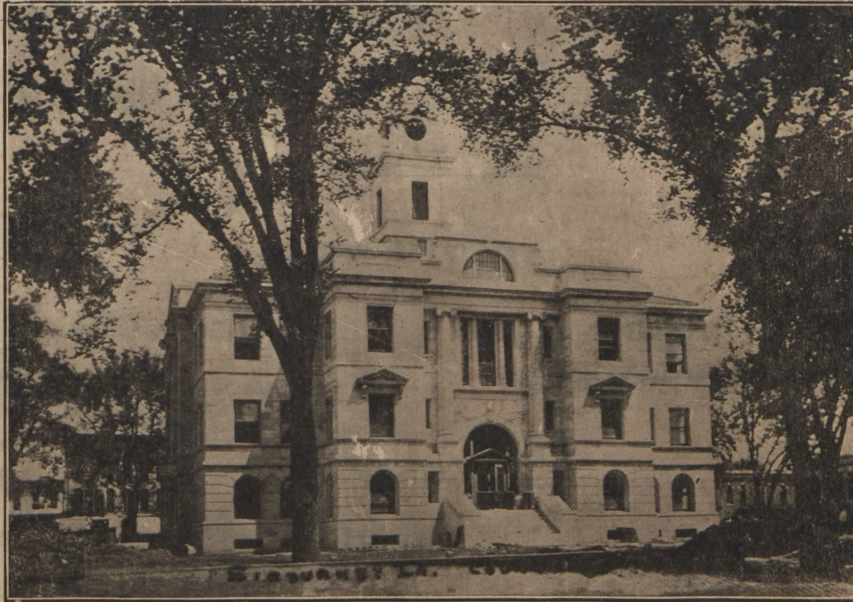
In the sixty-eight years of its history Keokuk County has made wonderful advancement. Today it is one of the wealthiest counties in the state and the land that could be had a little more than a half century ago for a little of nothing is now worth from \$100 to \$300 per acre for agriculture purposes. The fertility of the soil is unsurpassed, the intelligent citizenship, the happy homes, the almost constantly empty jail all speak volumes for the high standard of citizenship of Keokuk County.

# Atlas of KEOKUK COUNTY, IOWA

Issued By

**The Sigourney Review**

W. L. ETTER, Publisher



KEOKUK COUNTY COURT HOUSE

## TOWNSHIP INDEX

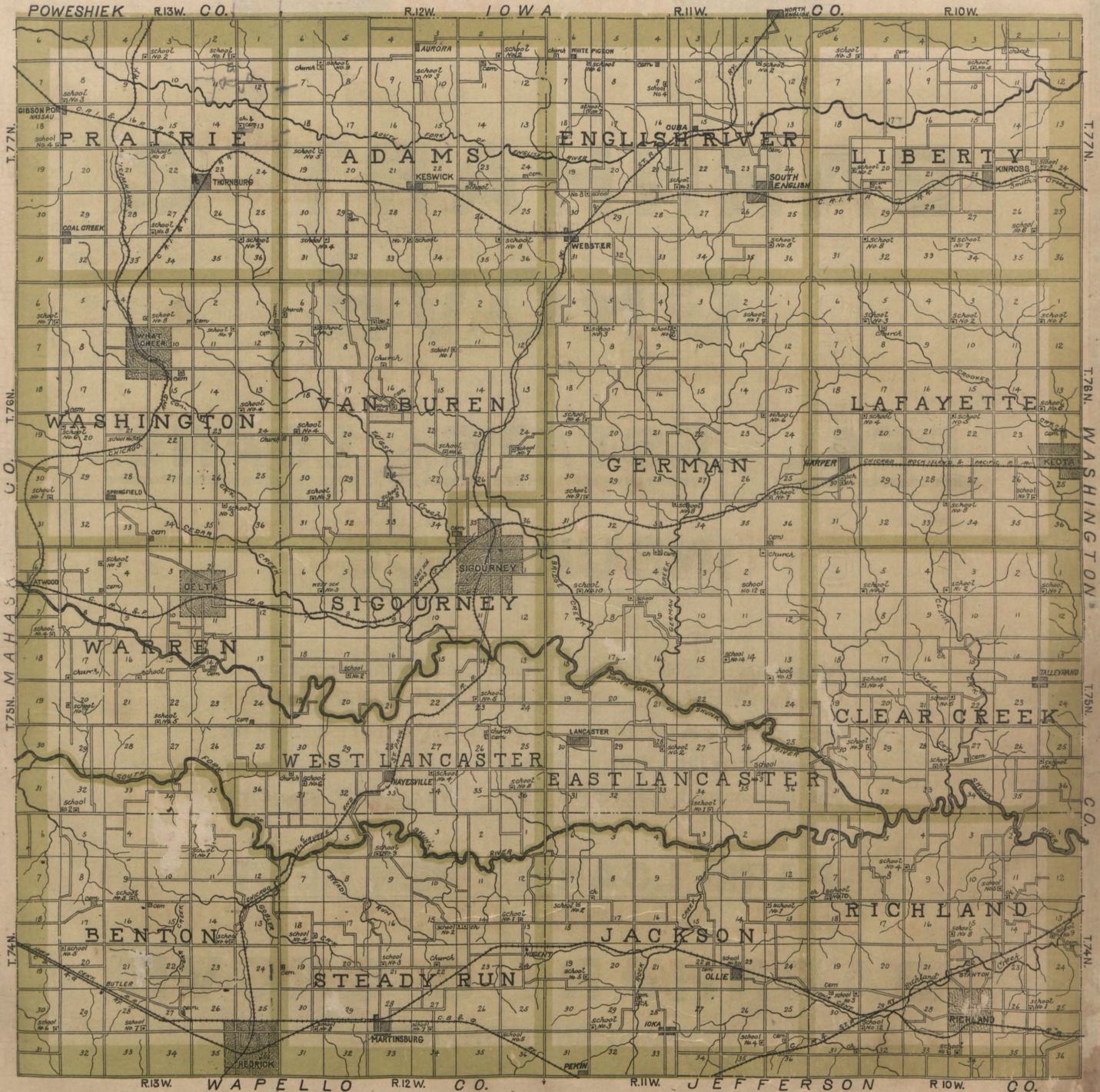
ADAMS	9
BENTON	35 and 27
CLEAR CREEK	21
EAST LANCASTER	23 and 31
ENGLISH RIVER	7
GERMAN	15 and 23
JACKSON	31
LAFAYETTE	13
LIBERTY	5
PRAIRIE	11
RICHLAND	29
SIGOURNEY	25 and 17
STEADY RUN	33
VAN BUREN	17
WARREN	27
WASHINGTON	19
WEST LANCASTER	25, 27, 33, 35
HISTORY	37

OUTLINE MAP OF  
KEOKUK COUNTY, IOWA

STATE HISTORICAL SOCIETY OF IOWA

\*G  
1433  
K3354

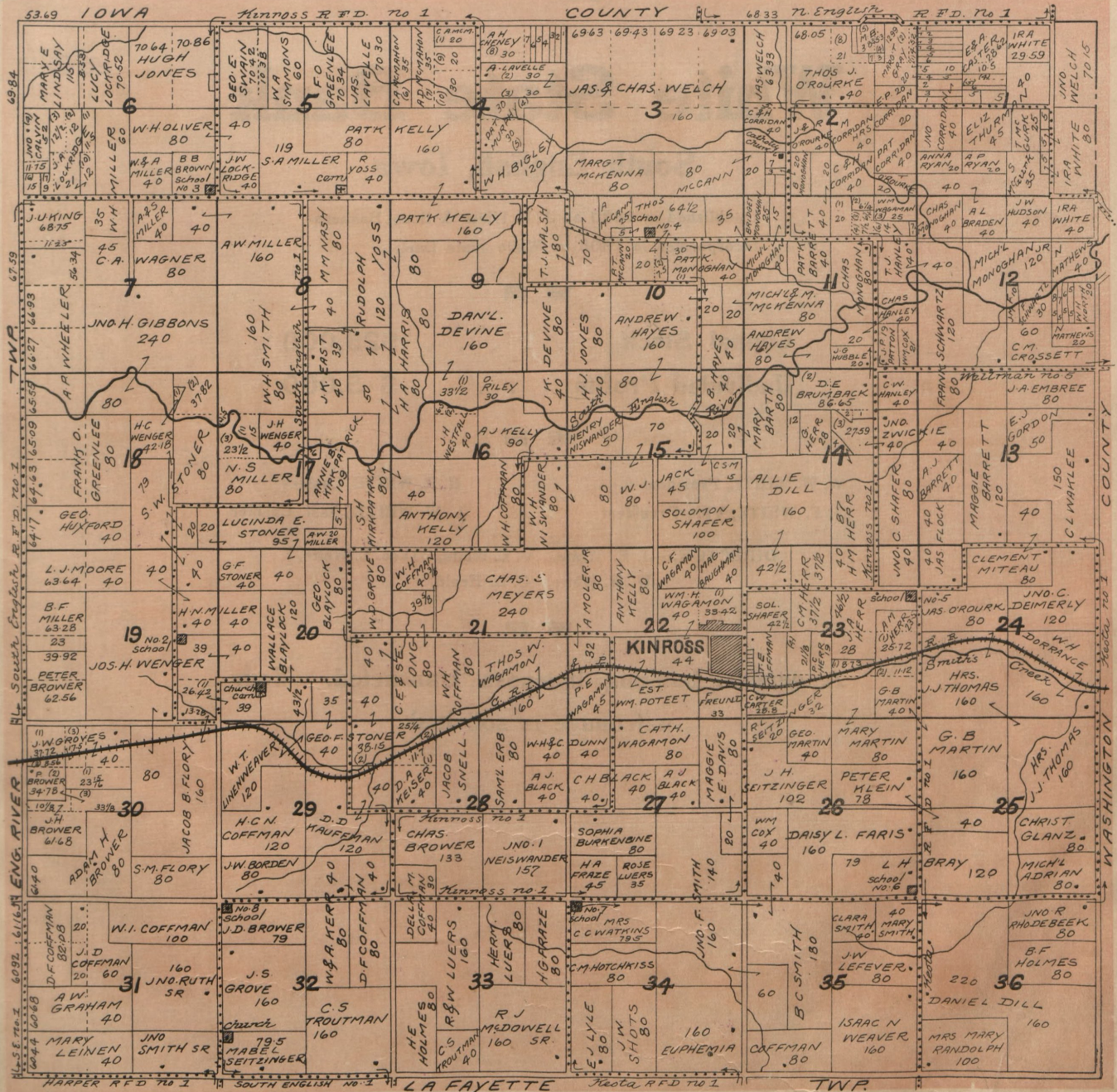
SCALE, 2 MILES TO THE INCH



# LIBERTY

TOWNSHIP 77 NORTH, RANGE 10 WEST OF 5th PRINCIPAL MERIDIAN

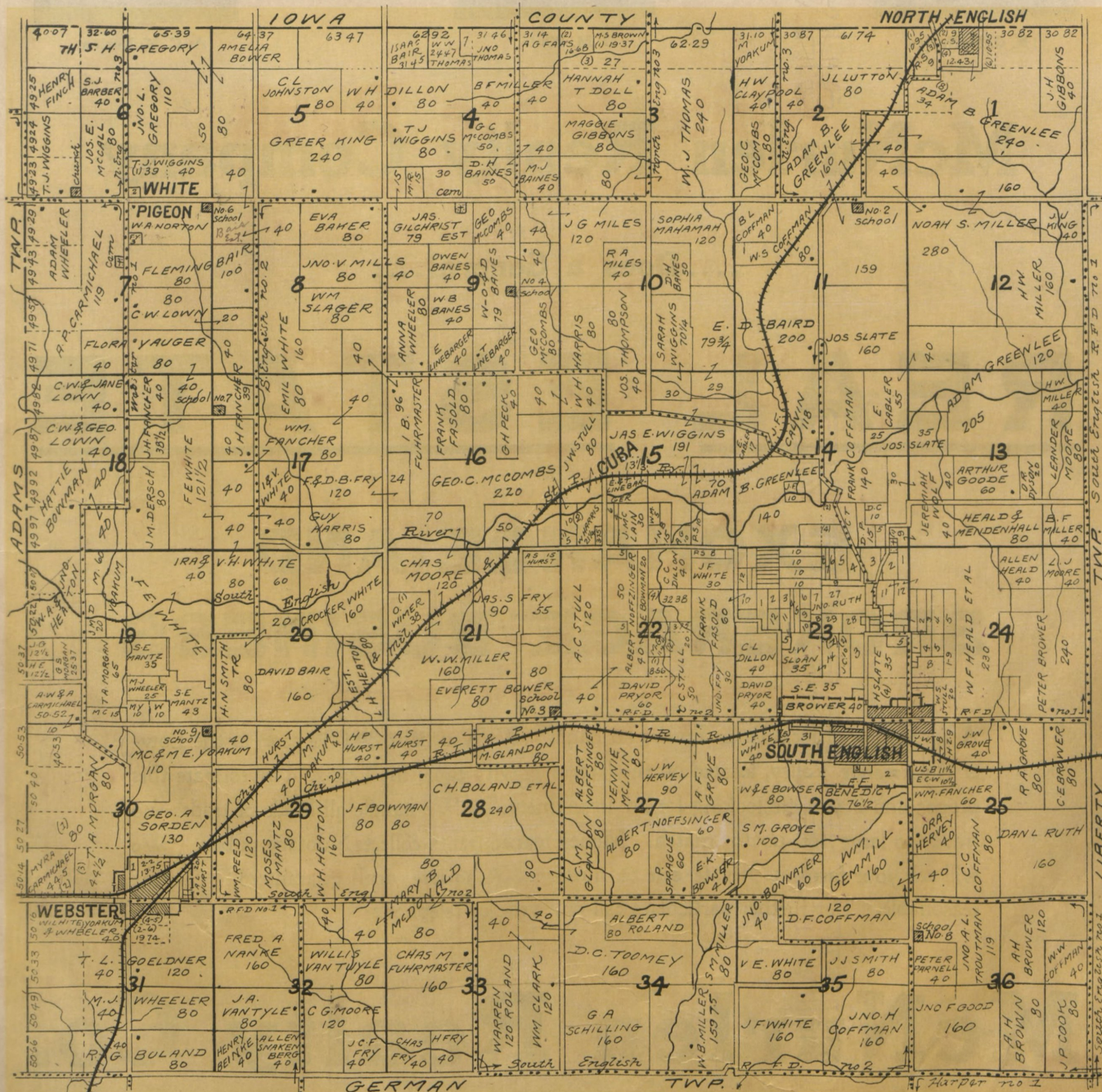
SCALE, 1/4 INCHES TO THE MILE



# ENGLISH RIVER

TOWNSHIP 77 NORTH, RANGE 11 WEST OF 5th PRINCIPAL MERIDIAN

SCALE, 1 1/4 INCHES TO THE MILE

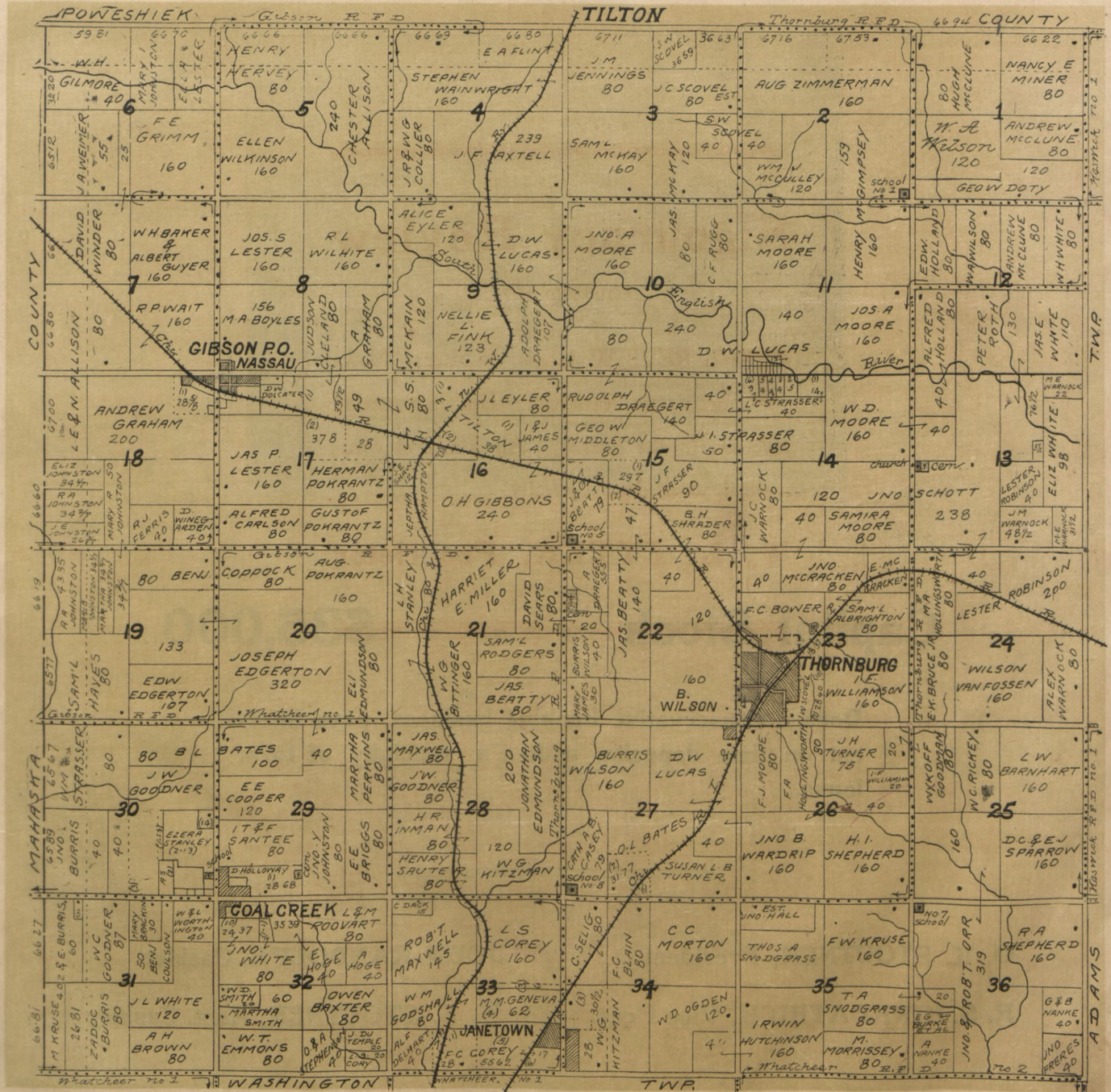




# PRAIRIE

TOWNSHIP 77 NORTH, RANGE 13 WEST OF 5th PRINCIPAL MERIDIAN

SCALE 1 1/4 INCHES TO THE MILE

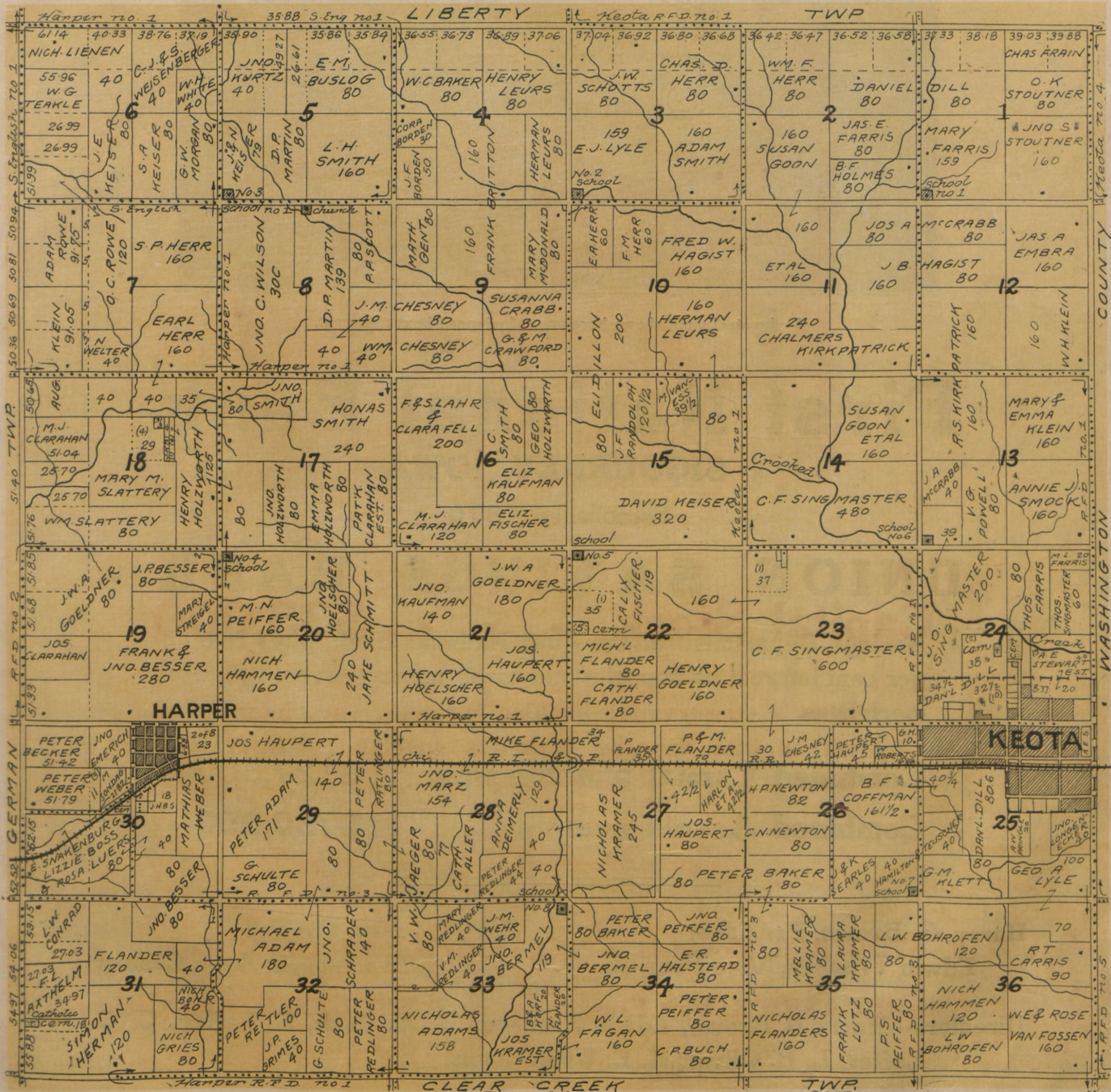




# LAFAYETTE

TOWNSHIP 76 NORTH, RANGE 10 WEST OF 5th PRINCIPAL MERIDIAN

SCALE 1/4 INCHES TO THE MILE



# NORTH PART OF GERMAN

TOWNSHIP 76 NORTH, RANGE 11 WEST OF 5th PRINCIPAL MERIDIAN

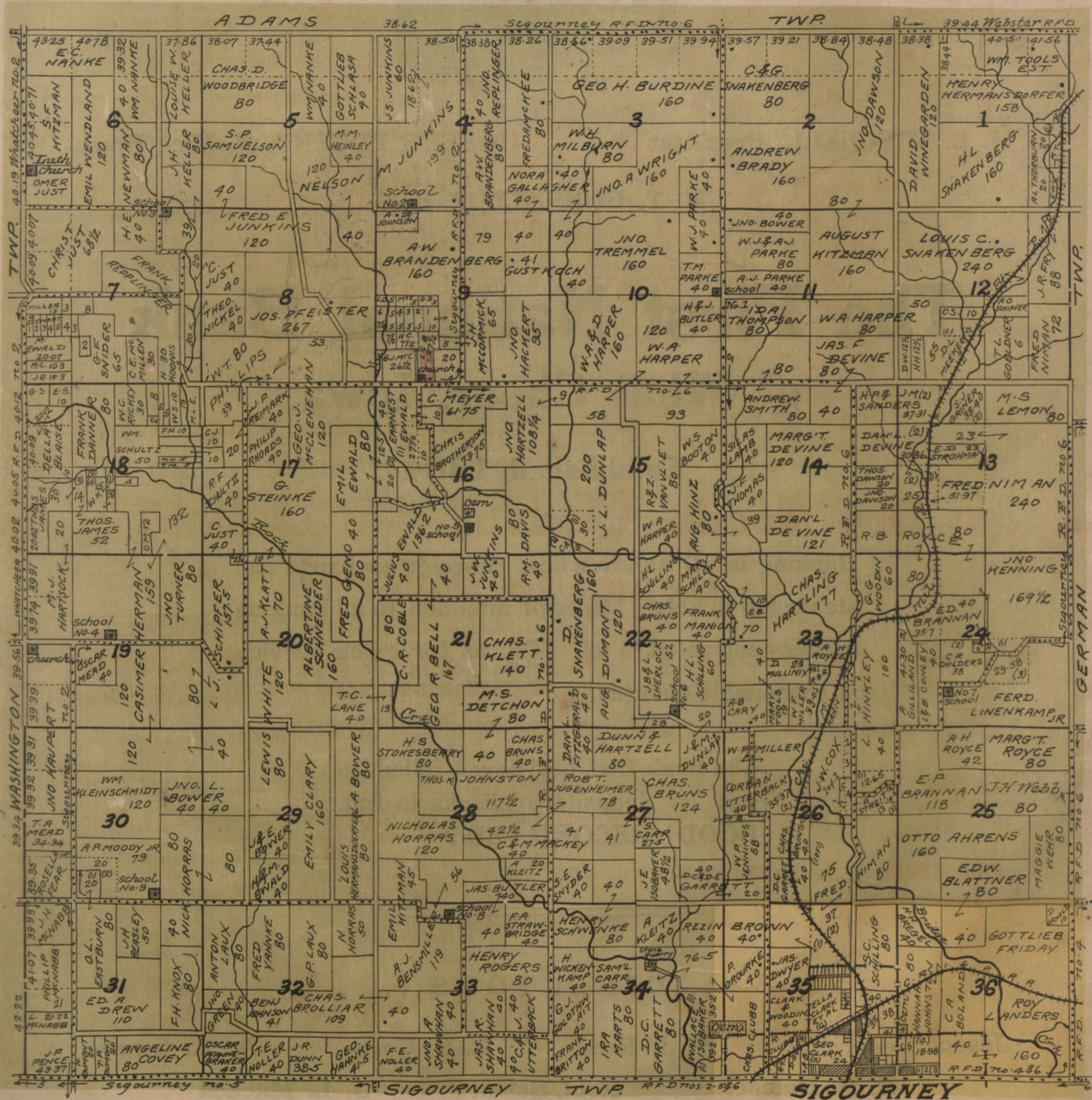
SCALE 1/4 INCHES TO THE MILE



# VAN BUREN AND PART OF SIGOURNEY

TOWNSHIP 76 NORTH, RANGE 12 WEST OF 5th PRINCIPAL MERIDIAN

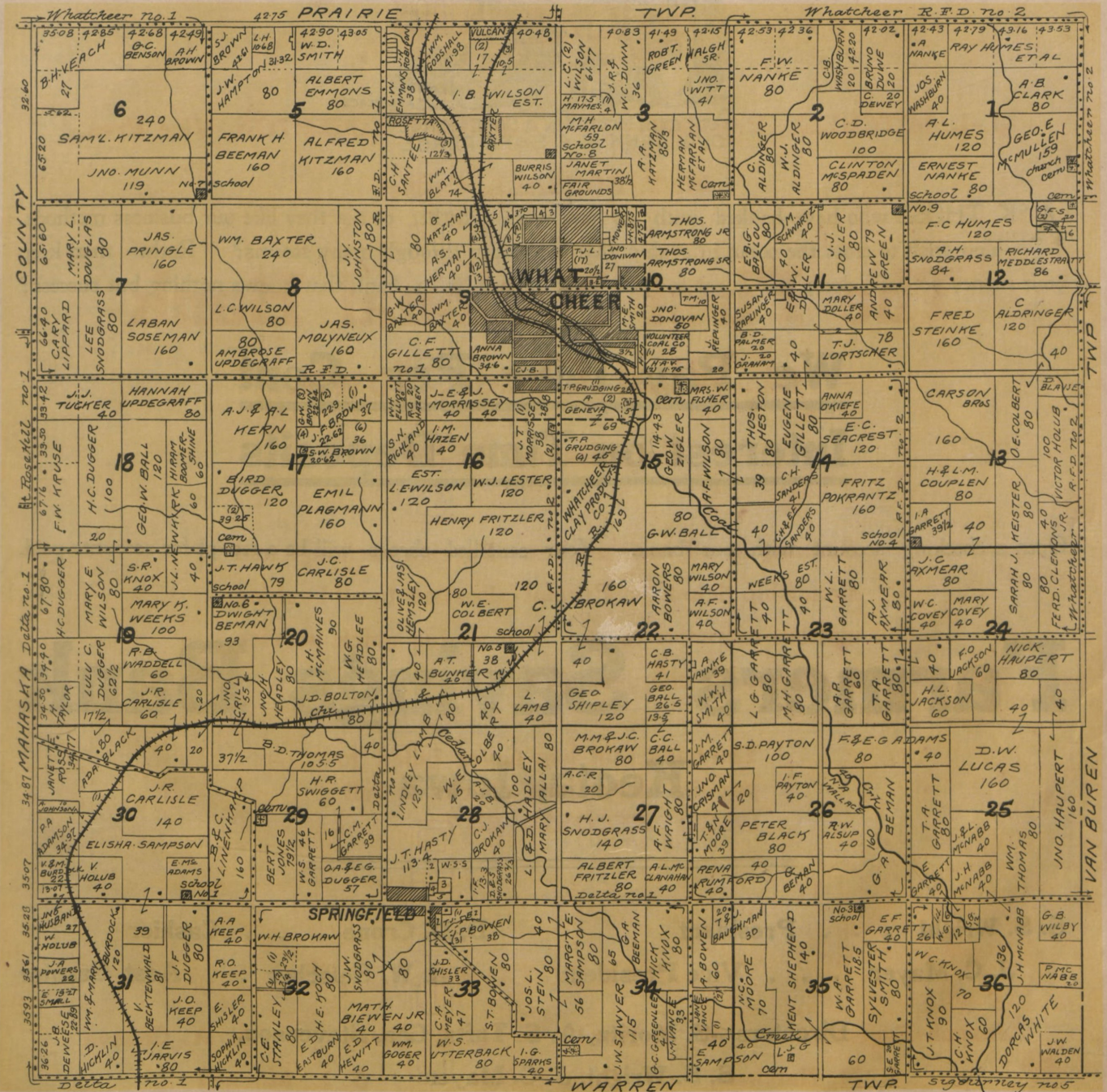
SCALE, 1/4 INCHES TO THE MILE



# WASHINGTON

TOWNSHIP 76 NORTH, RANGE 13 WEST OF 5th PRINCIPAL MERIDIAN

SCALE 1/4 INCHES TO THE MILE



# CLEAR CREEK

TOWNSHIP 75 NORTH, RANGE 10 WEST OF 5th PRINCIPAL MERIDIAN

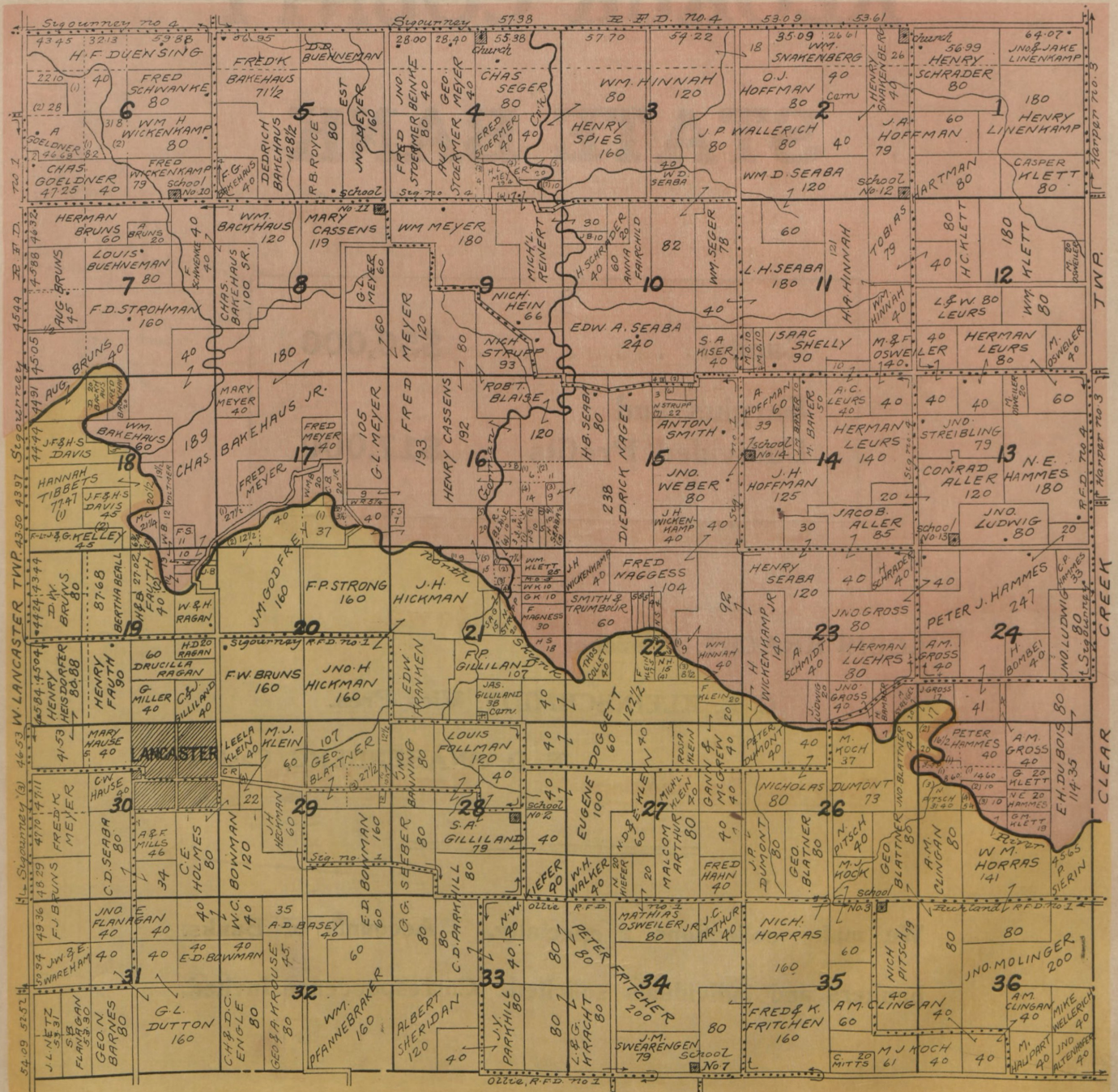
SCALE 1/4 INCHES TO THE MILE



# PARTS OF GERMAN AND EAST LANCASTER

TOWNSHIP 75 NORTH, RANGE 11 WEST OF 5th PRINCIPAL MERIDIAN

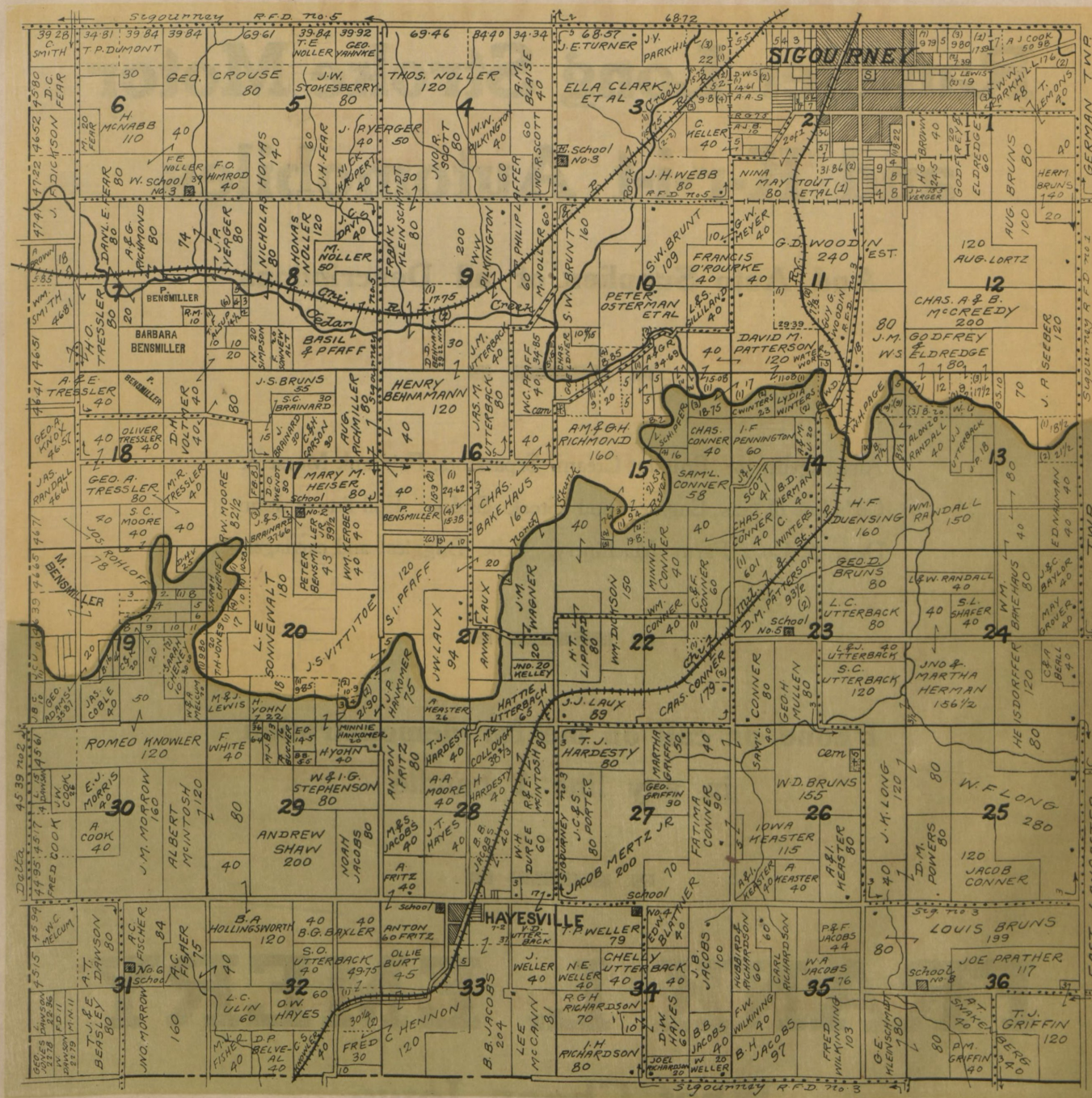
SCALE 1/4 INCHES TO THE MILE



# PARTS OF SIGOURNEY AND WEST LANCASTER

TOWNSHIP 75 NORTH, RANGE 12 WEST OF 5th PRINCIPAL MERIDIAN

SCALE, 1 1/4 INCHES TO THE MILE



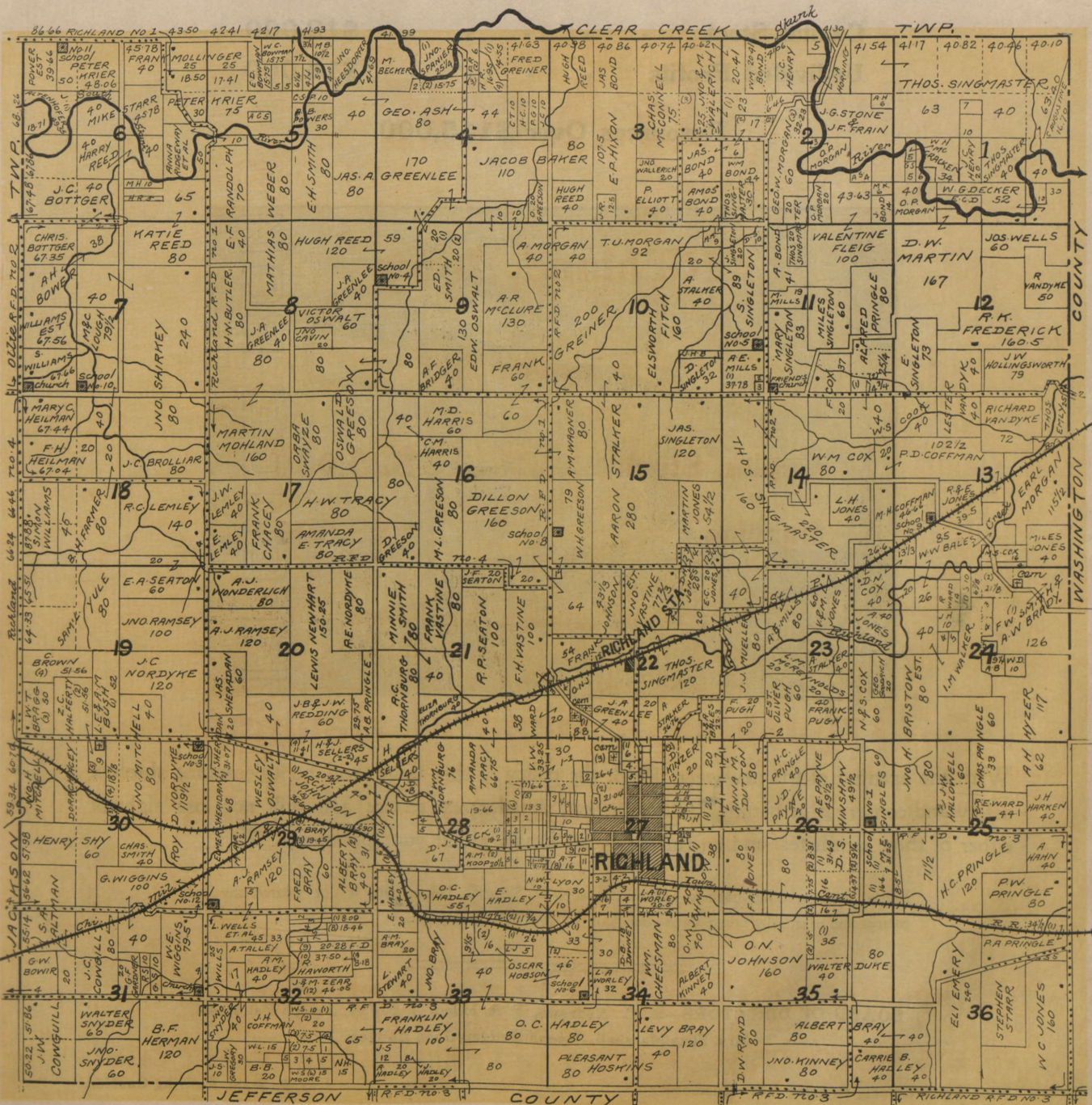




# RICHLAND

TOWNSHIP 74 NORTH, RANGE 10 WEST OF 5th PRINCIPAL MERIDIAN

SCALE, 1 1/4 INCHES TO THE MILE



# JACKSON AND PART OF EAST LANCASTER

TOWNSHIP 74 NORTH, RANGE 11 WEST OF 5th PRINCIPAL MERIDIAN

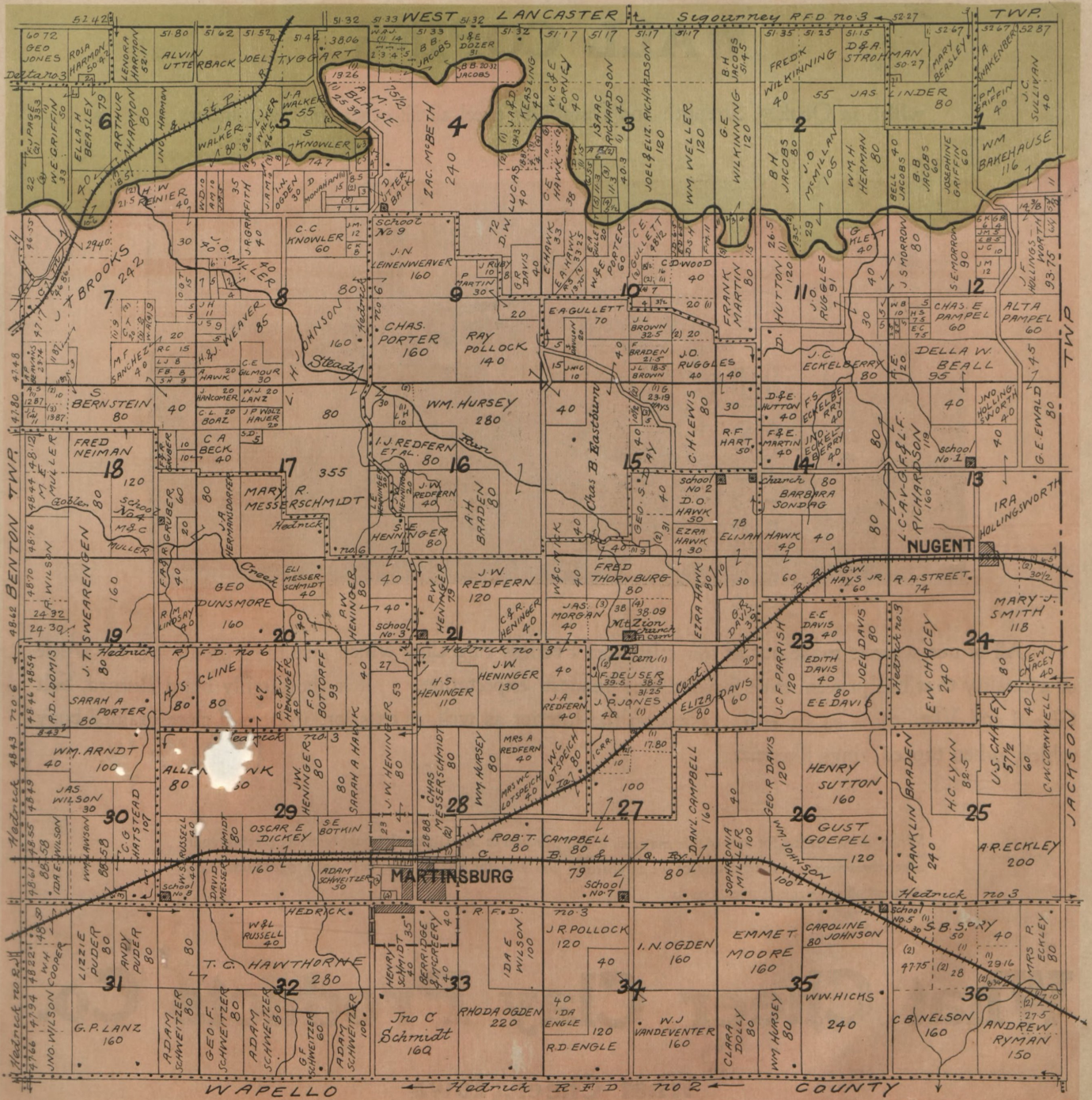
SCALE, 1/4 INCHES TO THE MILE



# STEADY RUN AND PART OF WEST LANCASTER

TOWNSHIP 74 NORTH, RANGE 12 WEST OF 5th PRINCIPAL MERIDIAN

SCALE, 1/4 INCHES TO THE MILE







Class \*G  
Book 1433  
K 3554  
1912  
Acc. 95650

D. T. Stockman

Geo. B. Baker

# STOCKMAN & BAKER

Counselors-at-Law

SIGOURNEY, IA.

## A General Law Business Transacted

Abstracts furnished. Titles perfected. Insurance against loss by fire, lightning, hail and wind. Farm loans with lowest rates and best options.

# State Bank of Keota

Keota, Iowa

---

Capital Stock . . . . .	\$50,000
Undivided Profits . . . . .	\$25,000

---

## ... OFFICERS ...

C. F. Singmaster, President

C. A. Lacey, Cashier

J. W. Stewart, Vice President

J. G. Ranous, Asst. Cashier

## ... DIRECTORS ...

C. F. Singmaster

J. W. Stewart

Thomas Singmaster

J. F. Romine

V. P. Hartman

---

FOUR PER CENT INTEREST PAID ON SAVINGS  
ACCOUNTS AND TIME DEPOSITS.

Commercial Paper Bought and Sold.

Farm Loans Made.

**A SAFE, SOUND, CONSERVATIVE  
ACCOMMODATING BANK**



G. E. BARNHART



JOHN GROVE

# BARNHART & GROVE

REAL ESTATE, LOANS,  
INSURANCE

Always have a choice selection of farms and town property for sale or exchange. We can also quote you prices and give literature on lands anywhere in the Middle West, as we represent some of the best real estate firms doing business today. Before buying or selling your farm or town property call on us. We can make you money.

FARM LOANS 5 PER CENT

## BARNHART & GROVE

SOUTH ENGLISH, IOWA.

# White State Bank

South English, Iowa

Established in 1890 as J. F. White & Sons, Bankers

Incorporated in 1908 as White State Bank



Capital Stock . . . . . \$25,000

Undivided Profits . . . . . \$ 5,000



W. W. WHITE, President

H. R. WHITE, Cashier

J. F. WHITE, Vice President

L. W. WHITE, Asst. Cashier

DIRECTORS--J. F. White, V. E. White, Theo. E. White,  
W. W. White, C. L. Heald



**A general banking business transacted. Your  
patronage is solicited.**





N. G. McNurlen



J. M. White



A. C. McNurlen

## McNurlen Realty Company

....Does a General....

# REAL ESTATE

## EXCHANGE AND BROKERAGE BUSINESS

A special list of local lands always on hand. We also have 84,000 acres in the Lower Rio Grande Valley, located on the largest gravity canal in Texas. Investigate this proposition if you are looking for an investment. We handle all kinds of trades--no trade too large for us to match. Money loaned; rents collected; notary public. We will sell your farm at private sale or auction. A square deal guaranteed. Terms reasonable. For further particulars call on, write or telephone

# McNurlen Realty Co.

Office in Union State Bank Building, Keota, Iowa. Phone 269.

---

---

# Sigourney Review

...FOUNDED 1871...

**T**HE REVIEW Gives the Local News accurately, fearlessly. Best advertising medium in the county. All kinds of commercial work done correctly.

**W. L. ETTER, Proprietor**

---

---

# UNION STATE BANK

KEOTA, IOWA



**Capital Stock - - - \$35,000**

Does a conservative banking business, pays interest on time deposits, makes a specialty of farm loans.

---

**O. K. STOUTNER, President**

**JOHN RANDOLPH, Cashier**

**R. S. KIRKPATRICK, Vice Pres.**

**W. F. STOUTNER, Asst. Cashier**



In the steel vault shown here are safe deposit boxes for rent.

# First National Bank

## SIGOURNEY, IOWA

Established 1870

# UNION SAVINGS BANK

Savings Department of the First National Bank, pays four per cent interest on deposits and loans money on real estate mortgages.

**Combined Capital and Surplus, . \$127,500**

**Combined Assets over . . . . \$750,000**

---

**Harry G. Brown, President**  
**Edwin Franken, Vice Pres.**

**J. R. Mackey, Cashier**  
**C. C. Williamson, Asst. Cashier**

**Directors---Harry G. Brown, Edwin Franken, L. A. Funk, E. Laffer, C. C. Laffer, L. B. Oliver, K. E. Willcockson.**

Established in 1856

56 Years Experience  
in Merchandising

# SCHIPFER BROS.

Sigourney, Iowa



## Dry Goods, Clothing and Ladies' Ready to Wear

We buy direct from the largest mills in the United States in Clothing, Cloaks, Suits, Dress Goods, Carpets, Rugs, Linoleums, Lace Curtains, Hosiery and Underwear, saving you the jobber's profit, thereby making you lower prices than any of our competitors.

### Ladies' Ready to Wear Department Offers---

Exclusive and authoritative styles. GOWNS for reception or evening wear. WRAPS of unusual and striking designs. STREET DRESSES in the newest materials, exceptionally smart in style and trimming.

### Our Clothing Department---

Represents such well known manufacturers as Adlers' Collegian Clothes, Graduate Clothes for Young Men, Woolly Boy Clothes for the Small Boy, Lion Brand Shirts and Collars.

# SCHIPFER BROS.

"THE STORE THAT SELLS WOOLTEX"



**J. L. MITCHELL, President**

**JOSEPH EDGERTON, Vice Pres.**

**W. T. BONSALL, Cashier**

# **The First National Bank of What Cheer, Iowa.**

**Established 1884**

**Banking in all its branches. Foreign exchange and  
steamship tickets. Prompt attention to all banking  
matters entrusted to us. Try us for quick service  
at reasonable charges.**

**The bank that has never failed to  
pay its depositors checks in full.  
GOOD RECORD, EH?**

---

**...DIRECTORS...**

**Joseph Edgerton**

**W. J. Reed**

**L. S. Corey**

**A. A. Geneva**

**E. R. Hatcher**

**Robt. Schott**

**J. L. Mitchell**



**A**SK THOSE who have banked with us for years whether or not they like our business methods. You wish to cross the ocean in a ship that has ridden through many storms? Rather than keep your money yourself, don't you want to put your money in a bank that knows nothing but success?

**We Pay Four Per Cent**  
**Interest on Time Deposits**

Open a checking account with our bank. Your cancelled checks will be a receipt for accounts paid.

**Farmers Savings Bank**  
**Keota, Iowa**

S. S. Wright . . . President                      D. D. Crone . . . Cashier  
 J. C. Mayer . . . Vice President                  J. W. Helscher . . . Asst. Cashier

Directors---S. Moritz, A. S. Tufts, Geo. Stevenson,  
 S. S. Wright, J. C. Mayer

A Bank's Success

Community's Gain

**I**N conducting the affairs of this bank, the management has always believed that men of good business judgment and conservative ideas appreciate the sound, progressive bank conducted on safe and strictly business lines; that its growth and success are the community's gain; that such a bank best protects the interest of its depositors, and thus proves its greatest help to the commercial development and credit of the community.

## **Citizens Savings Bank**

"The Bank of The People"

**Sigourney, Iowa**

Forty-nine Stockholders

Resources \$335,000



. . . Established 1884 . . .

# KEOKUK COUNTY STATE BANK

Capital . . . . . \$50,000

Surplus and  
Undivided Profits . \$17,000

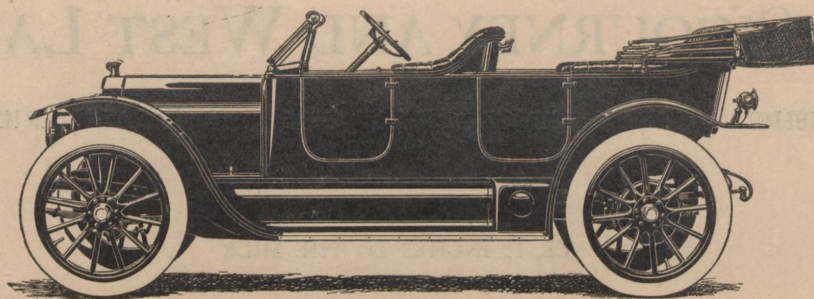
LOUIS KRACHT, President

G. E. KLEINSCHMIDT, Vice Pres.

F. D. SNAKENBERG, Cashier

---

We make collections a specialty. Accounts of Banks,  
bankers and individuals solicited. Correspondence Invited.



1913 Cross Country Rambler

# Rambler Long Stroke Motor and K-r-i-t Automobiles

And Auto Supplies of all Descriptions



Also agent for Empire Cream Separators, Fairbank Morse & Co.'s line of Gas Engines and Stock Scales. Full line of John Deere & Co.'s Farm Machinery, Velie Buggies and carriages.



Phone or call on me for demonstration  
in any line I handle

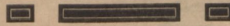


# FRANK L. EMERY

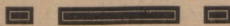
What Cheer, Iowa

# FIRST NATIONAL BANK

Richland, Iowa



Capital Stock . . . . .	\$25,000
Surplus . . . . .	\$5,000



Transacts a General Banking  
Business



C. F. SINGMASTER, President

T. F. McCARTY, Cashier

E. S. WOLCOTT, Vice President

R. E. McCARTY, Asst. Cashier

**B. C. ANDREWS, Pres.**

**T. A. MILLER, Vice Pres.**

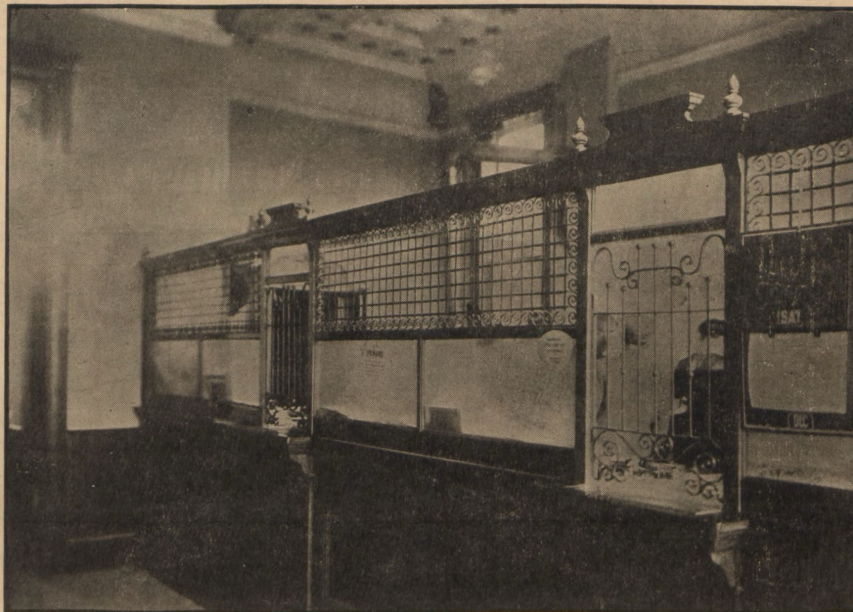
**A. C. JACOBS, Cashier**

# Ollie Savings Bank

Capital Stock . . . . . \$12,000

Undivided Profits . . . . . \$14,000

**Resources Over \$115,000**



With the opening of the new year, 1913, the policy of this bank will be to combine absolute safety and conservative banking with efficient, satisfactory service and will not lose sight of either of these requisites. and on this basis we kindly solicit your patronage.

Special attention to any business entrusted to us by U. S. mail. Uncle Sam is our trustworthy co-partner and practically brings us to your door. GIVE US A TRIAL.

---

**BOARD OF DIRECTORS---B. C. Andrews, T. A. Miller, J. B. Fye, Joseph Patterson,  
Mrs. Eliza Marshall, Joseph Bottger, John Bottger.**

**Miss Luna Haines, Retiring Asst. Cashier**

**J. N. Stahl, Retiring Cashier**

**A. G. HARROW, President**  
**FRED SAUER, Vice President**

**F. H. TINSLEY, Cashier**  
**O. H. CUDDY, Asst. Cashier**

**HEDRICK**  
**STATE BANK**

**Hedrick, Iowa**

---

**General Banking Business**

**Pay Four Per Cent on Time Deposits**

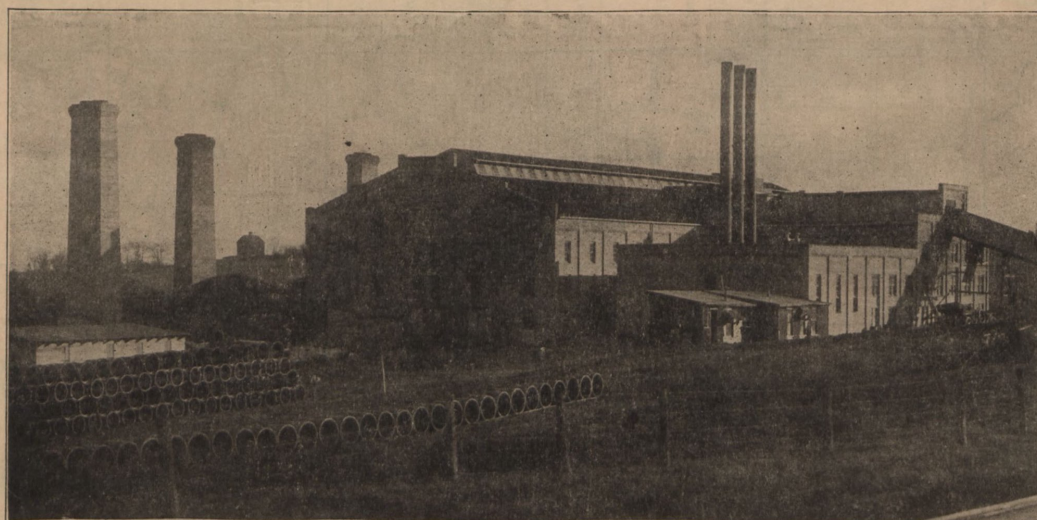
---

**Start a Bank Account. It is the Royal  
Road to Success**

We take this means of announcing to the trade throughout this territory of our debut  
in the Clay Products market with a complete stock of

# SEWER PIPE, DRAIN TILE FLUE LINING AND WALL COPING

which in Quality, Strength and Durability excel all all others on the market.



All of our ware is made out of our celebrated Peerless Fire Clay which results in producing an article of a quality that has proven even beyond our fondest expectation. It is thoroughly Hard Burned, Salt Glazed and Vitrified; is as smooth as glass on the interior as well as exterior, and has a close grained body which, when tapped, rings like metal.

When in the market for any of this material, it will pay you to investigate thoroughly before placing your order elsewhere as we feel confident we can furnish you with the best of the best at a minimum cost. Address all your communications to

## What Cheer Clay Products Co.

What Cheer, Iowa

# Hayesville Savings Bank

Hayesville, Iowa

Capital Stock . . \$10,000

... OFFICERS ...

GEORGE RICHARDSON, Pres.    W. H. GAYLORD, Vice Pres.

GEORGE S. GRIFFIN, Cashier

... DIRECTORS ...

George Richardson

George S. Griffin

W. H. Gaylord

W. H. Herman

Fred Wilkening

General banking business. Your patronage  
is appreciated.